

3UVIEW

Taxi Rear Window LED Transparent Screen Installation Instruction



Contact Us:

ShenZhen 3u view CO., LTD

Address: Building B, Zhuoke Science and Technology Park, No. 190, Chongqing Road,
Fuhai Street, Baoan District, Shenzhen, Guangdong, China

Website: www.3uview.com

Catalog

<i>Taxi Rear Window LED Transparent Screen</i>	1
<i>Installation Instruction</i>	1
Preparation After Receiving the Product	2
1. Installation Accessories	5
2. Installation tools	6
3. Installation steps	6
4. Precautions	10

Preparation After Receiving the Product

1. Prepare a 220V/110V to 12V transformer



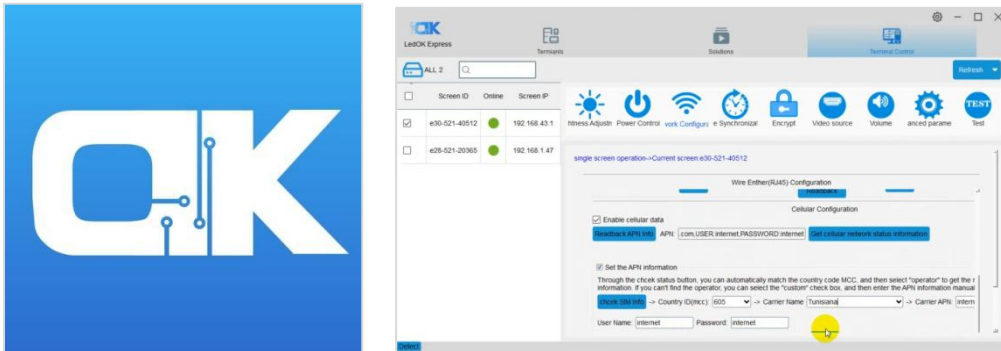
2. Prepare an activated SIM card and insert it into the SIM card slot of the system card



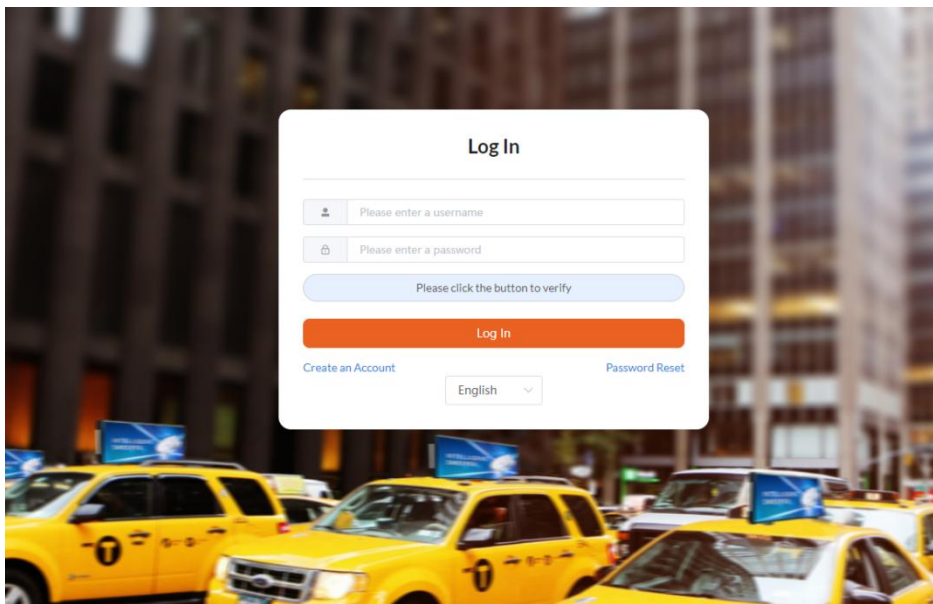
3. Light up the LED screen through the transformer



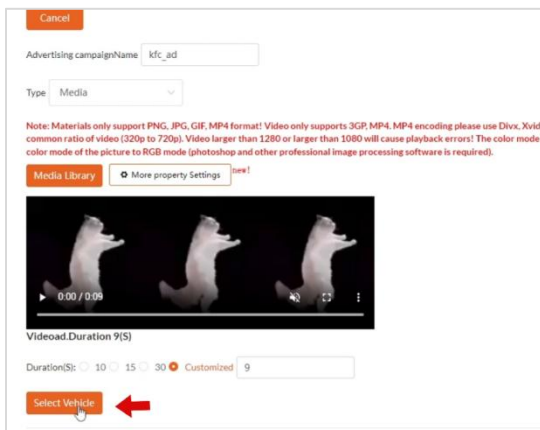
4. Download the LEDOK software to match the APN



5. Log in to the computer advertising publishing platform to check whether the LED screen is online normally



6. Upload and publish advertising content



3UVIEW

7. Install the LED screen on the vehicle





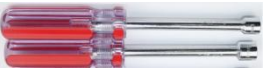


1. Installation Accessories



1. Box bracket	Can be attached to the rear window
2. Box input power cord	3 core power supply cord
3. External power cord outside the box	3-core power supply line (with control line fuse)

2. Installation tools

				
M6 * 10mm screws - fixing the cabinet and bracket (can be equipped with external hexagon)	M6 * 50mm screws— fixing the box and the car body (can be equipped with external hexagon)	M6 nut — fixing the box and car body	M6 hexagonal wrench - used to fix the box with M6 screws	M6 screw socket - used to fix the box with M6 nuts (can be equipped with an external hexagonal wrench)

3. Installation steps



4 fixed adhesive brackets





2. Tighten the screw into the hole in the picture.



3. Tighten the bracket nut of the pasted part





4. Repeat this step for the other four corners and tighten the surrounding adhesive brackets.

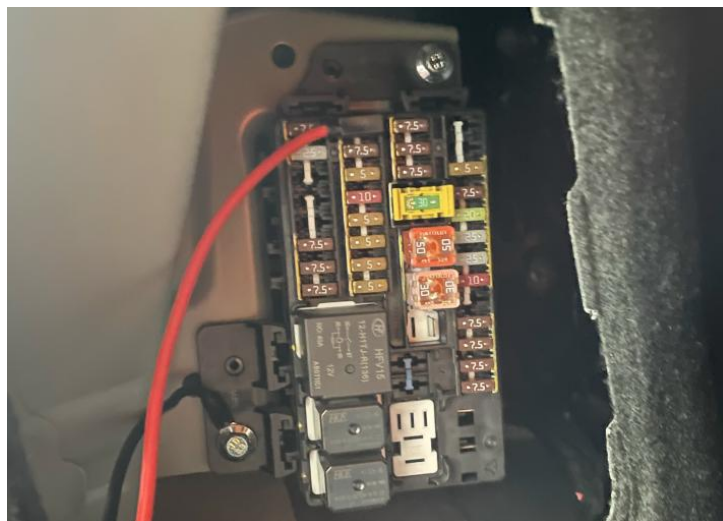


5. Tear off the protective film and paste it on the rear window of the car.





6. Paste the renderings



6. Next to the back seat of the car, the red wire is the positive electrode and the black wire is the negative electrode.
Complete the wiring and light up the test. finish installation.

4. Precautions

1. Pay attention to the neat arrangement of all wires to avoid affecting other functions of the vehicle.
2. Pay attention to the firmness of the wire ends when wiring, and the screws must be tightened.
3. The fixing screws between the bracket and the screen body must be tightened to prevent them from falling off due to vibration during vehicle operation, causing hidden dangers.
4. Record the ID number and corresponding license plate number on the screen (to facilitate later maintenance and inspection, and to prepare for vehicle grouping in the future).