

3UVIEW

Takeaway Box LED Screen Installation Instruction



Contact Us:

ShenZhen 3u view CO., LTD

Address: Building B, Zhuoke Science and Technology Park, No. 190, Chongqing Road,
Fuhai Street, Baoan District, Shenzhen, Guangdong, China

Website: www.3uview.com

Catalog

<i>Takeaway Box LED Screen</i>	1
<i>Installation Instruction</i>	1
Preparation After Receiving the Product	2
1. Installation Accessories	5
2. Installation tools	5
3. Installation steps	6
4. Precautions	9

Preparation After Receiving the Product

1. Prepare a 220V/110V to 12V transformer



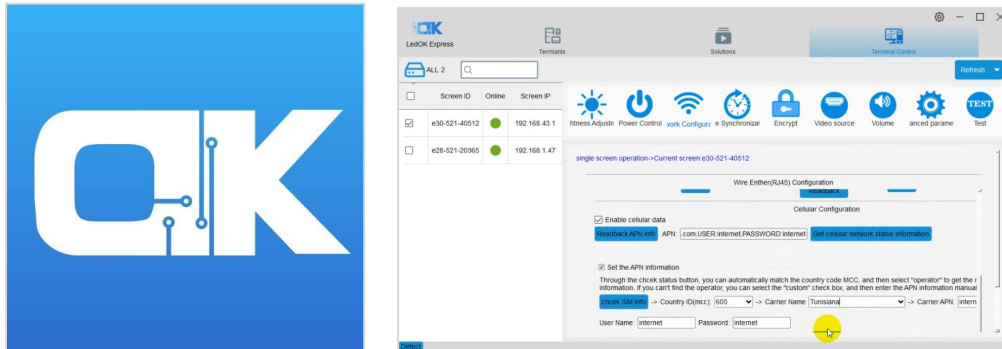
2. Prepare an activated SIM card and insert it into the SIM card slot of the system card



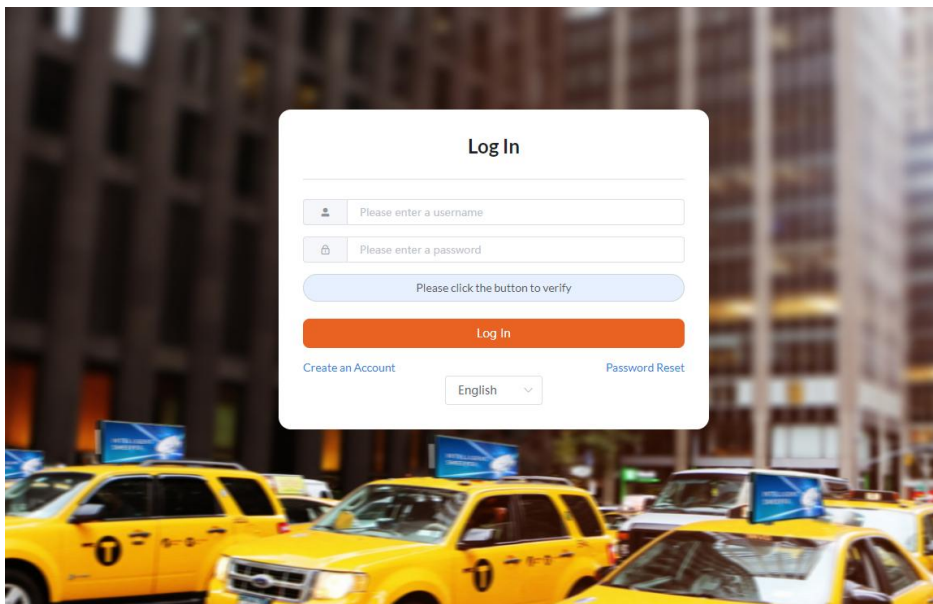
3. Light up the LED screen through the transformer



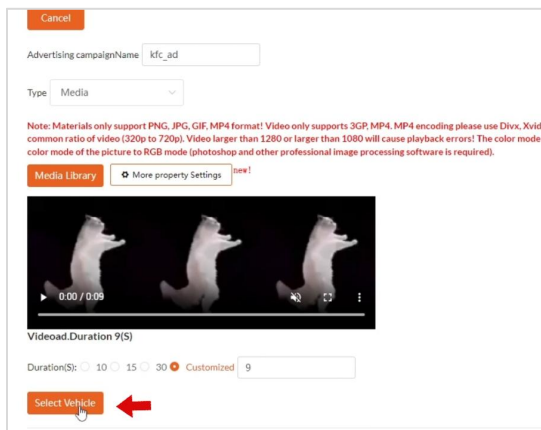
4. Download the LEDOK software to match the APN



5. Log in to the computer advertising publishing platform to check whether the LED screen is online normally



6. Upload and publish advertising content






3UVIEW

7. Install the LED screen on the vehicle



1. Installation Accessories

Order	Name	quantity	Graphic	Explain
1	Mounting brackets	1		Fixed box and rear seat bottom plate
2	nut	4		Lock the positive and negative poles of the power cord
3	External power cord	1		main power cord

2. Installation tools

				
Scissors	Multimeter	drill bit	pliers	Phillips screwdriver

3. Installation steps

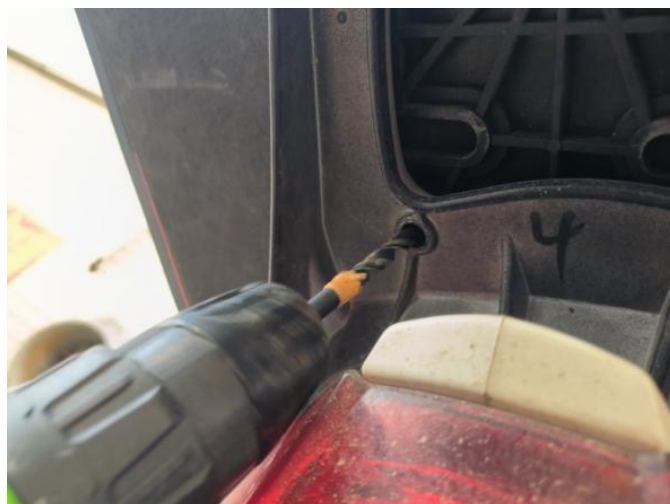


All accessories display



2. Place takeout boxes
And align the base of the takeaway cart

3UVIEW

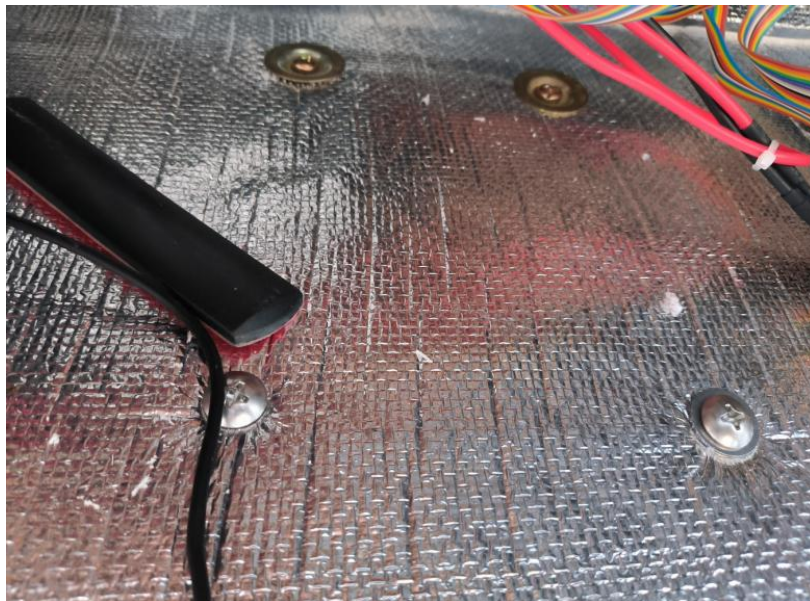


3. Drill holes between the base and the box



4. After drilling is completed,
The fixing brackets and screws need to be tightened with washers.





5. Installation renderings of internal installation.



6. The +12V line is connected to the positive electrode of the battery, and the GND line is connected to the negative electrode of the battery.
The control terminal is connected to the ACC fuse of the fuse box.

3UVIEW



7. After the installation is completed, check whether the wiring is firm and whether the vehicle can operate normally.

Turn on the power switch, turn on the key, and if the screen lights up normally, the installation is complete.

4. Precautions

1. Pay attention to all wires being arranged neatly to avoid affecting other functions of the vehicle or rider operation.
2. Pay attention to the firmness of the wire ends when wiring, and the screws must be tightened.
3. The fixing screws of the bracket and the screen body must be tightened to prevent them from falling off due to vibration during vehicle operation, causing hidden dangers.
4. Record the ID number and corresponding license plate number on the screen (to facilitate later maintenance and inspection, and to prepare for vehicle grouping in the future).