



SHENZHEN 3U VIEW CO.,LTD

Backpack LCD Screen

- Full Color Screen
- 4G Cluster Control
- GPS Positioning





CONTENT

01

Company Profile

02

Products introduce

03

Products case



PART/01

Company Introduction

3U VIEW is a national high-tech enterprise with over a decade of experience, 3U VIEW mainly focus on LCD/LCD mobile intelligent displays terminal.



3UVIEW

SMART VEHICLE DISPLAY



Founded in 2013, 3uview is located in Fuyong, an industrial town in the west of Shenzhen. It is a high-tech mobile smart LED display manufacturer, mainly focusing on LED/OLED mobile smart display terminals, suitable for various mobile vehicles, hotels, shopping malls and other high-end places.

3uview is committed to creating an intelligent mobile smart display ecosystem.

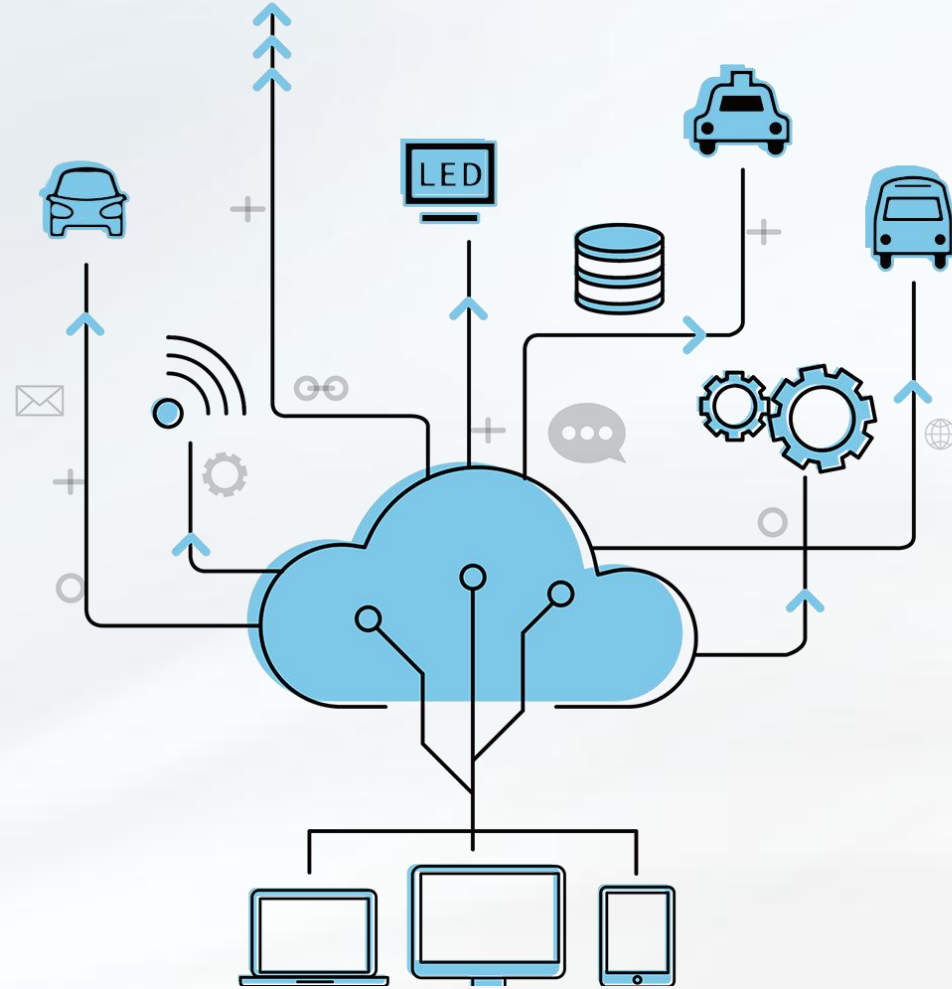
Provide mobile IoT display devices for global customers.

Adhering to the "craftsman spirit, excellence, and pursuit of excellent quality", create interconnection for mobile advertising and let your brand spread all over the world.





4G / GPS / WIFI / INTERNET
Cluster management,
One-click publishing, GPS Positioning



Workshops for SMT, Assembly, Aging test, Packaging etc, with total floor area more than **2000 square** meters.

26 sets of Panasonic SMT machines, capable of **30000+** monthly production.

Annual production of intelligent mobile screens is above **80000 sets**.





IATF16949 Certification

3U VIEW is The first company in China to be certified to IATF 16949 international vehicle standard system.



35

intellectual property patents

2

invention patents

20

utility model patents

7

software patents

6

product appearance patents



Honor & Certification

3UVIEW

SMART VEHICLE DISPLAY

National Hi-tech Corporations Certificate
ISO9001 System Certification
14001 Environmental System Certification
And 3C, CE, FCC



A large blue circle with a white border, containing the text 'PART/02' in white. 'PART/' is in a smaller, sans-serif font, and '02' is in a larger, bold, sans-serif font.

PART/02

Products & Cooperation

The backpack doubles as an expression of your personality and a versatile entertainment hub, offering individual or clustered control options for tailored experiences.





Product description



Introduction to Backpack LCD Screen

The use of LCD backpack smart advertising screens enables precise targeting and enhances advertising effectiveness, particularly among mobile demographics who favor backpacks. With its flexibility, advertisers and individuals can craft compelling ad content to boost brand visibility, leveraging creative design and production. Moreover, ongoing technological innovations promise greater convenience and efficiency for both advertisers and consumers.



Product structure

3UVIEW
SMART VEHICLE DISPLAY



New Backpack LCD Screen



The whole body is made of water-repellent material, durable and strong, and not afraid of being exposed to rain.



New Backpack LCD Screen



Using high-brightness outdoor LCD lamp beads, the brightness can reach 5000 CD/m² under daylight.



The brightness sensor can be used to automatically adjust the brightness of the LCD screen according to environmental changes to maintain the best display effect at all times.





Product advantages

3UVIEW
SMART VEHICLE DISPLAY



Waterproof and sealed against moisture.
The surface is oxidized and does not rust or corrode.



Use high-quality backpack fabric to
improve the service life and texture of the
backpack



Product advantages

3UVIEW
SMART VEHICLE DISPLAY



New Backpack LCD Screen

The LCD backpack screen boasts precise targeting for enhanced advertising effectiveness, flexible customization, heightened brand exposure through captivating content, and continual technological innovation for enhanced user experiences.



Product parameters

3UVIEW
SMART VEHICLE DISPLAY



LCD 15-inch
horizontal screen

15 inch 1280*800



LCD 15-inch
horizontal screen

15 inch 1280*800



LCD 21.5-inch
vertical screen

21.5 inch 1920*1280



LCD 24-inch
vertical screen

24 inch 1920*1080



LCD 27-inch
vertical screen

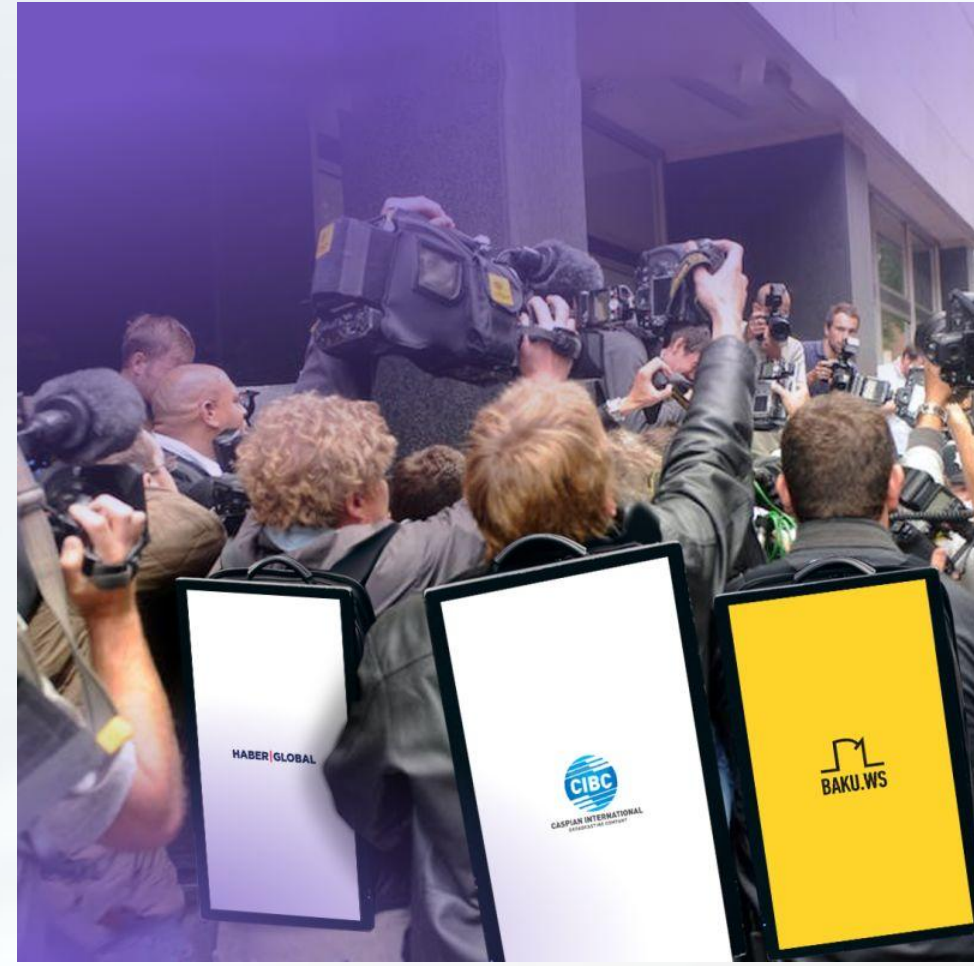
27 inch 1920*1080



LCD 32-inch
vertical screen

32 inch 1920*1280

Tips: The weight, brightness, power, and refresh frequency of the above boxes may vary depending on orders and batches, and the display area size can be customized according to needs.





Look forward to working with you

linkman: Martin / +86 185 6572 2221

Website: www.3uview.com

E-mail: martin@3uview.com

Address : building B, Zhuoke Science Park, No. 190 Chongqing Road, Zhancheng community, Fuhai street, Bao'an District, Shenzhen

